

Tree Grates: Square & Rectangular

Due to an increase in demand for a stronger and more practical tree grate, we have designed a range of laser cut steel grates that are far superior to the aluminium grates currently on the market.

Dimensions

- Grate sizes: 1200mm x 1200mm, 1200mm x 1600mm, 1600mm x 1600mm
- Centre cut out: 380mm
- Custom sized and styled Tree Grates also available

Materials

- Laser cut steel plate
- Steel bar supports

Finishes

- Hot spray galvanised and powdercoated in your choice of colour
- ANTI SLIP "W" Rating for footpaths

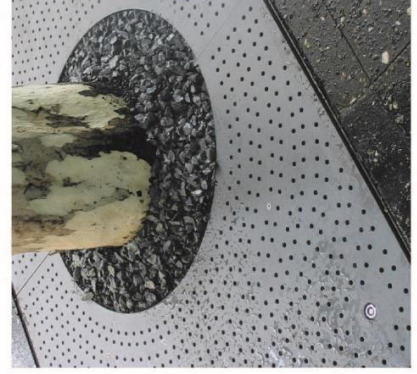
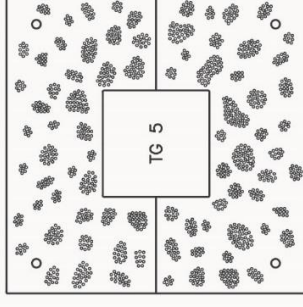
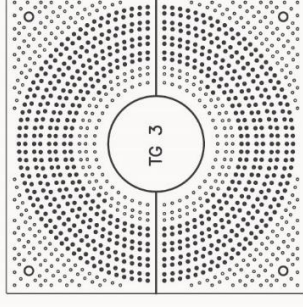
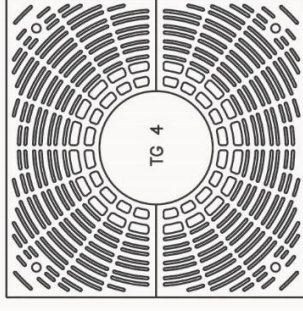
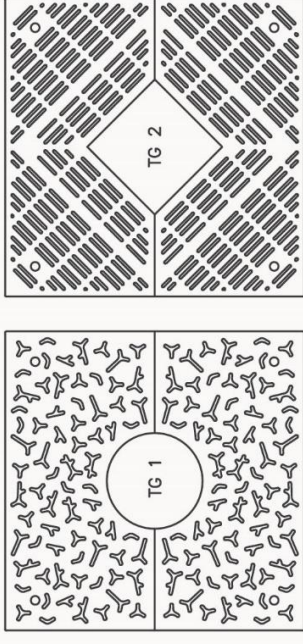
Fixings

- Galvanised angle support frame
- Quick release cam locks
- 6mm bolts

Options

- Off set tree grates
- Any size, shape or pattern available on request
- Variable centre cut out size
- Logos incorporated
- Illuminated grates
- Tree guards

[Click to view the latest Tree Grate projects online](#)



Get the latest specification news on



www.urbanff.com.au

07 3382 7372

info@urbanff.com.au

Urban
fountains + furniture